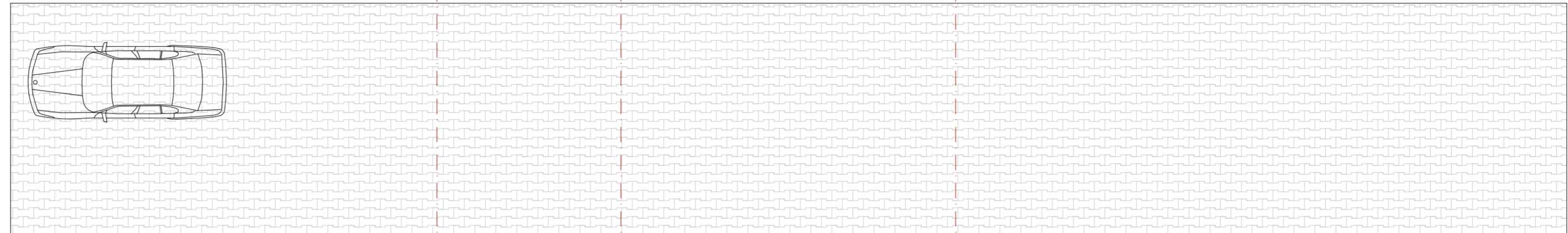
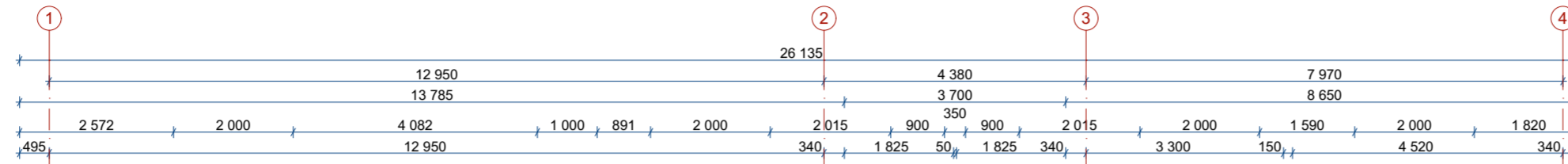
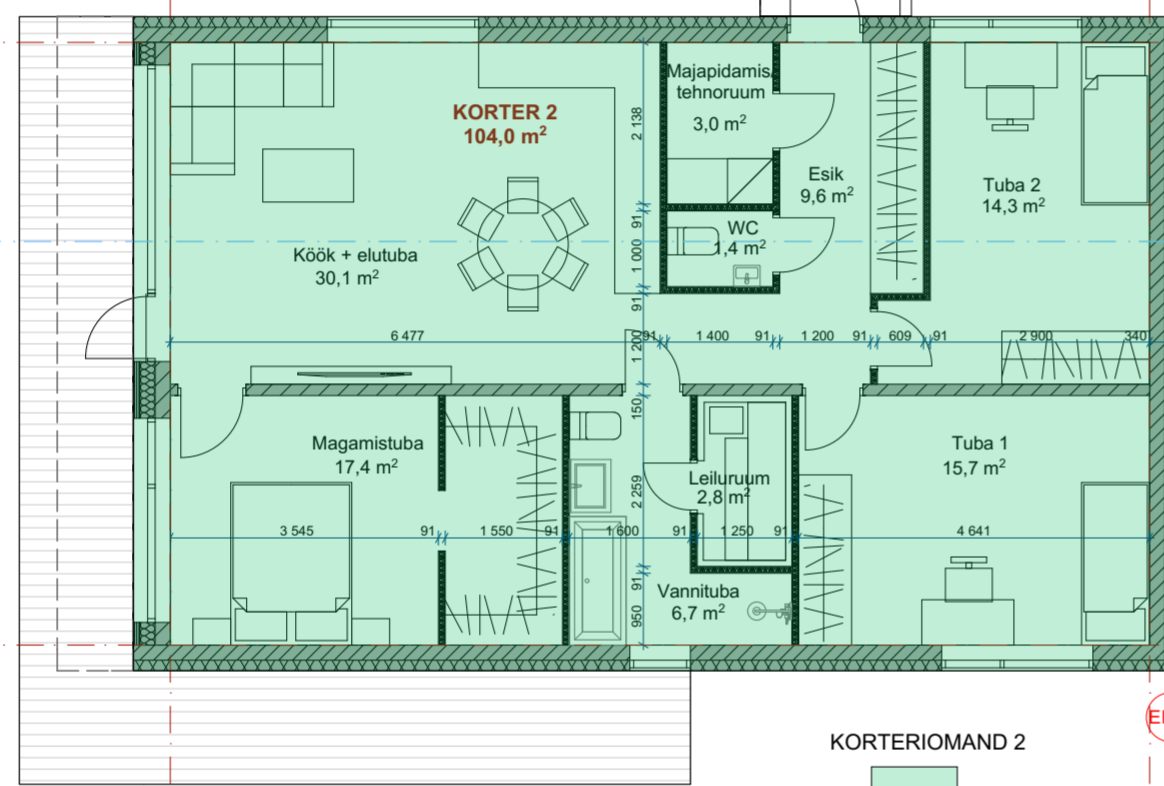
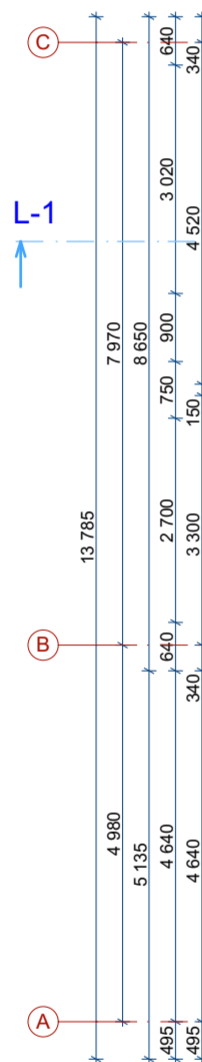


Vaade põhjast ▾



Vaade läänest ▾

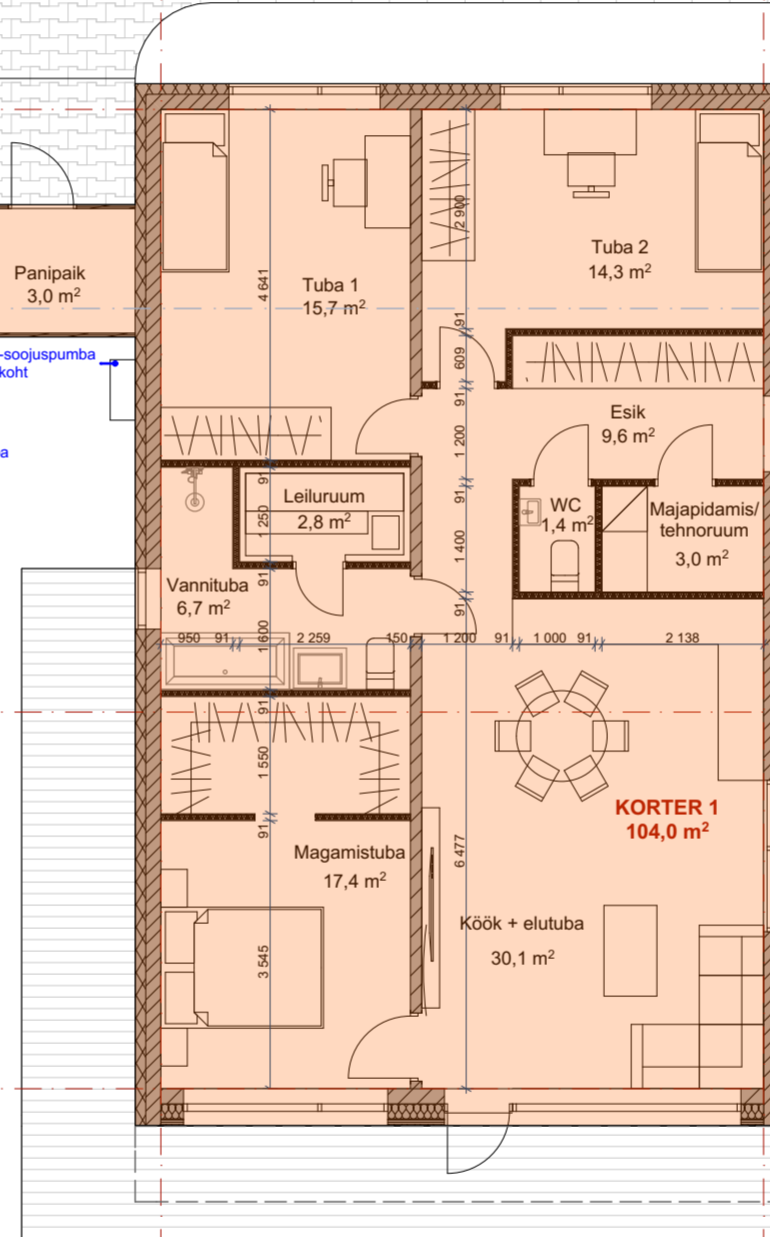
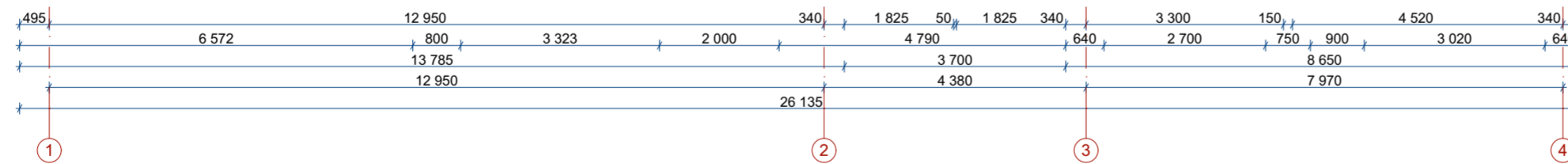


õhk-soojuspumba asukoht

õhk-soojuspumba asukoht

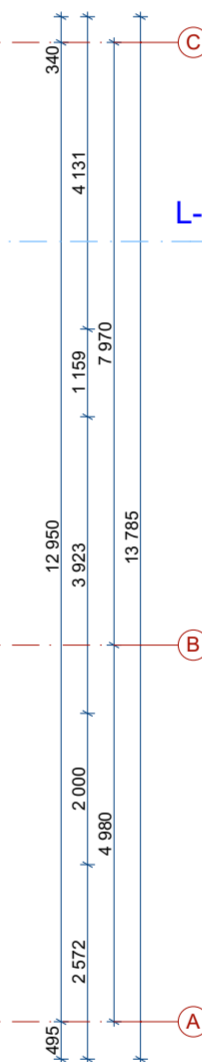
KORTERIOMAND 2

Vaade lõunast ▴



KORTERIOMAND 1

Vaade idast ▾



KORTER 1		m <sup>2</sup>
Esik		9,6
Majapidamis/teh.ruum		3,0
WC		1,4
Köök+elutuba		30,1
Magamistuba		17,4
Vannituba		6,7
Leiliruum		2,8
Tuba 1		15,7
Tuba 2		14,3
Panipaik		3,0
Korrus kokku:		104,0
<b>Korter 1 kokku:</b>		<b>104,0</b>
- s.h. eluruumi pind:		98,0
- s.h. tehno pind:		3,0
- s.h. üldkasutatavpind		3,0
KORTER 2		m <sup>2</sup>
Esik		9,6
Majapidamis/teh.ruum		3,0
WC		1,4
Köök+elutuba		30,1
Magamistuba		17,4
Vannituba		6,7
Leiliruum		2,8
Tuba 1		15,7
Tuba 2		14,3
Panipaik		3,0
Korrus kokku:		104,0
<b>Korter 2 kokku:</b>		<b>104,0</b>
- s.h. eluruumi pind:		98,0
- s.h. tehno pind:		3,0
- s.h. üldkasutatavpind		3,0

**STANDUP**  
architecture design / bureau  
IPSTANDUPSTANDUP  
architecture architecture  
design / bureau design / bureau  
TANDUPSTANDUP  
techure architecture arcf

AB Standup OÜ, Reg. nr. 11283768  
Tartu mnt 83-408 10115 Tallinn  
+372 580 44 719 www.standup.ee

objekt: **Paariselamu ehitusprojekt**  
Kurve tee 26, Vaskjala Küla, Rae vald, Harjumaa

tehlja: **North Courier OÜ**

vastutav arhitekt: **Tiiu Lepasaar**

arhitekt: **Liis Sepp**

joonis: **Korteriomandite jaotus**

kuupäev: **27.03.2020**

projekti staadium: **EP**

projekti osa: **AR**

töö nr: **20031801**

mõõtkava: **1:100**

leht: **AR-5-03**